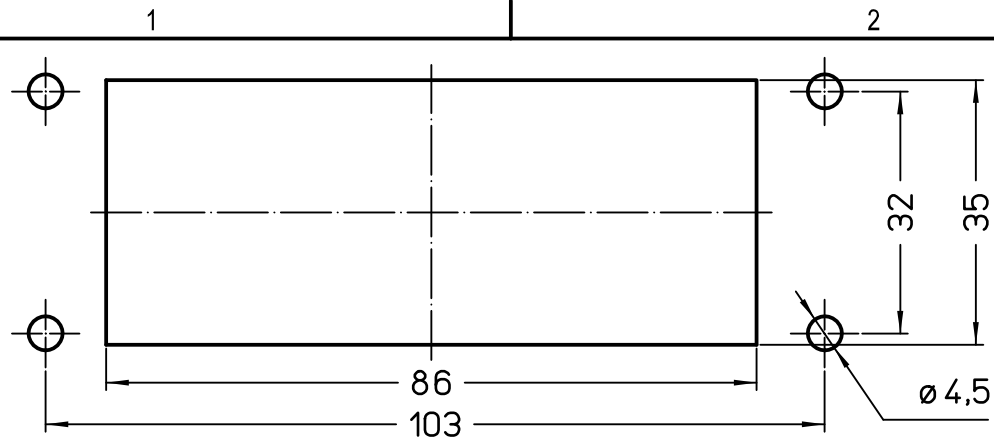
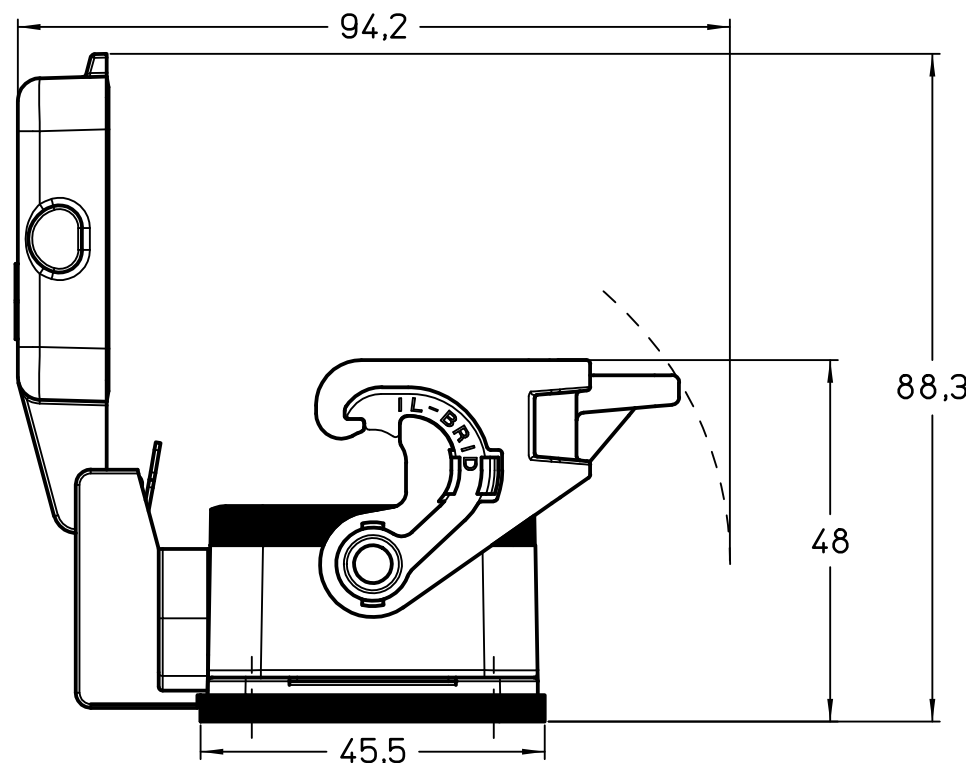
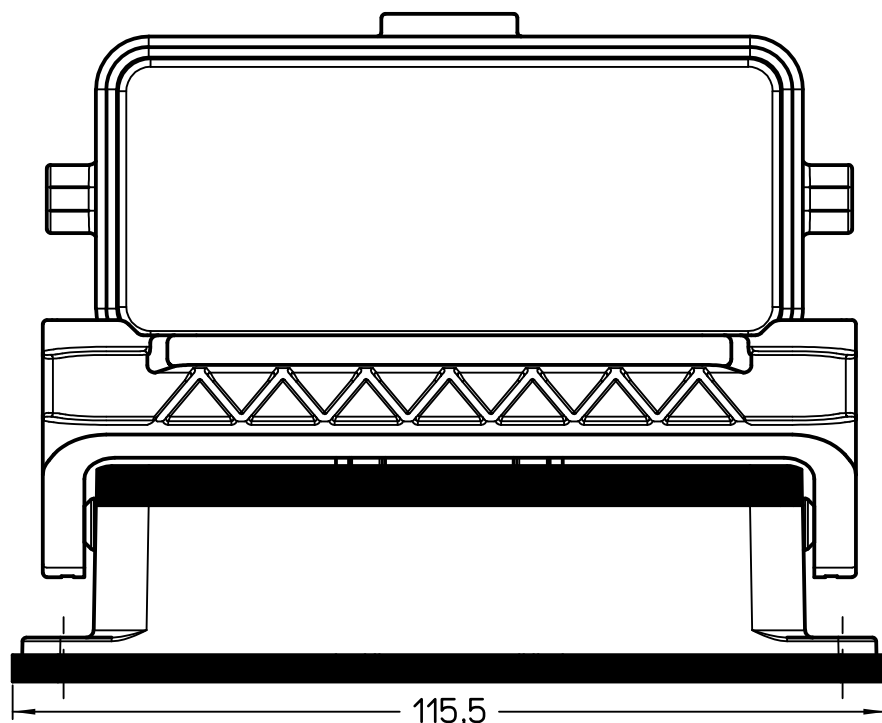
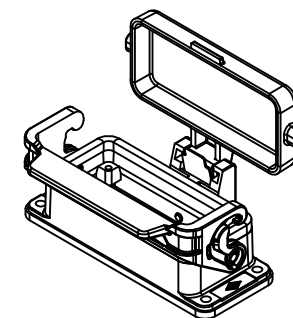


Diritti riservati All rights reserved



Panel cut-out



Dimensions
in mm

Simplified representation with dimensions without tolerance

Original Size A4

Date 07/03/23

Sign. G. Renna

CLI 16 LS

bulkhead mounting housing size "77.27", with 1 IL-BRID lever and cover

Scale
1:1



1

2

3